



Name _____ Class _____ Date _____

Match each of the following terms to its definition:

Topographic map

Sea stack

Mass movement

Load

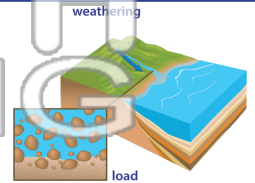
Sea arch

Sediment

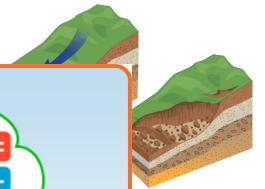
Erosion

Soil profile

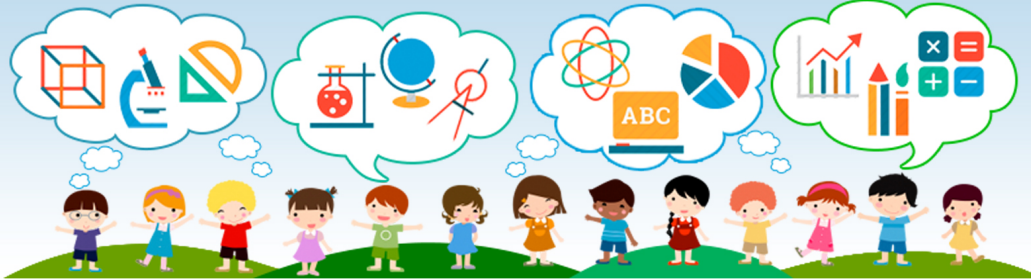
1. _____ - the materials a stream or river can carry including particles and dissolved materials; something that is carried



2. _____ - the sudden movement of large masses of rock material due to gravity; also called mass wasting



3. _____

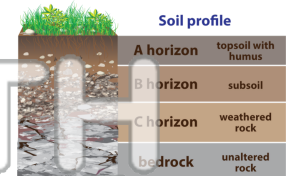


4. _____
water

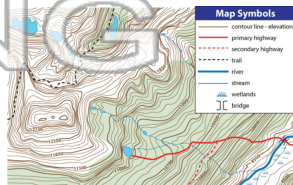
5. _____

PREVIEW
Please [Sign In](#) or [Sign Up](#) to download the printable version of this worksheet

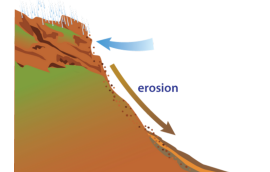
6. _____ - a cross section of the soil in a particular region, from the uppermost layer down to the bedrock



7. _____ - a map that shows many features (such as water, roads and landmarks) but also uses contour lines to precisely represent the size, shape and elevation of the features of the land



8. _____ - a process by which weathered rock and soil is transported to a new location; the wearing away of the Earth's surface by rain, wind, snow and ice





Name _____ Class _____ Date _____

Match each of the following terms to its definition:

Topographic map

Sea stack

Mass movement

Load

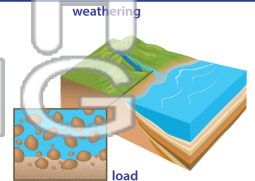
Sea arch

Sediment

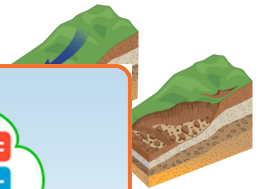
Erosion

Soil profile

1. **load** - the materials a stream or river can carry including particles and dissolved materials; something that is carried



2. **mass movement** - the sudden movement of large masses of rock material due to gravity; also called mass wasting



3. **sea arch**

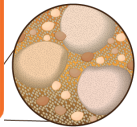


4. **sea stack**
water

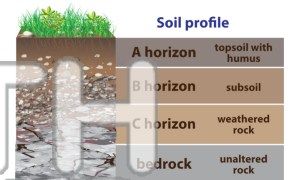


5. **sediment**

PREVIEW
Please [Sign In](#) or [Sign Up](#) to download the printable version of this worksheet



6. **soil profile** - a cross section of the soil in a particular region, from the uppermost layer down to the bedrock



7. **topographic map** - a map that shows many features (such as water, roads and landmarks) but also uses contour lines to precisely represent the size, shape and elevation of the features of the land



8. **erosion** - a process by which weathered rock and soil is transported to a new location; the wearing away of the Earth's surface by rain, wind, snow and ice

