

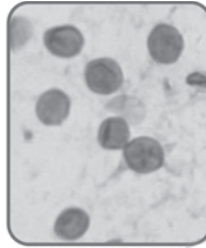


Name _____ Class _____ Date _____

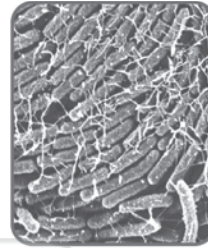
An **infectious disease** is a disease that can be spread from one organism to another. The organisms that are the cause of diseases are called **pathogens** which include protists, fungi, bacteria and viruses.



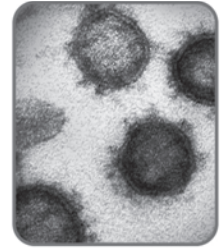
protist



fungi

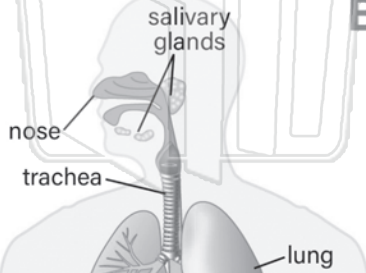


bacteria



virus

Body Defenses & Disease



2 **Second line of defense** - is a response to damaged tissue called the **inflammatory response**. The body releases chemicals and **white blood cells** into the tissue near the injured area to fight invading pathogens. White blood cells called **phagocytes** surround invading pathogens and break them down.



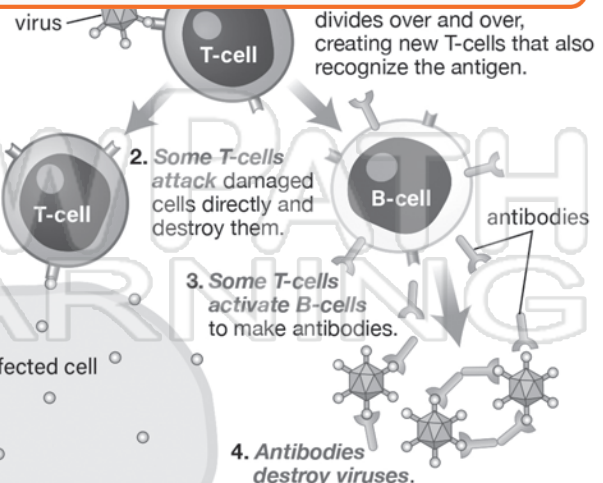
PREVIEW

Please [Sign In](#) or [Sign Up](#) to download the printable version of this worksheet

3 **immune response**, also known as the **immune system**. The white blood cells involved with the immune response are called **lymphocytes**.

T lymphocytes (T-cells) identify exactly which pathogens have invaded the body. Each type of T-cell recognizes one pathogen. What the T-cells actually recognize is something called an **antigen** that is on the pathogen.

B lymphocytes (B-cells) produce chemicals, called **antibodies**, which help to destroy the different types of pathogens. Some antibodies attach to the antigens and make it easier for **phagocytes** to destroy them. Other antibodies prevent pathogens from attaching to body cells.





Name _____ Class _____ Date _____

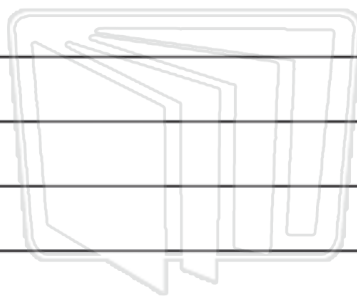
1st Line of Defense: _____

2nd Line of Defense: _____



PREVIEW

Please [Sign In](#) or [Sign Up](#) to download the printable version of this worksheet



NEWPATH
LEARNING

